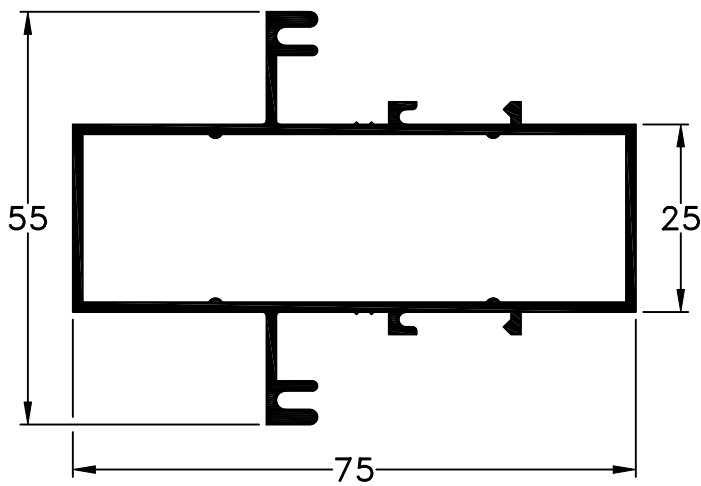
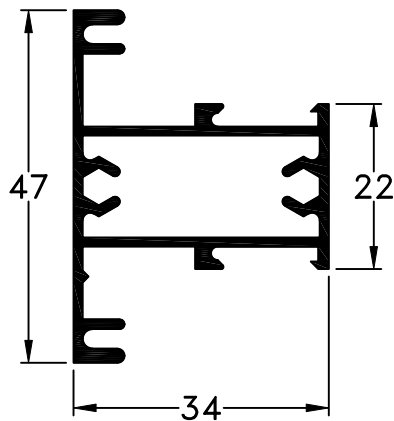


907 - Marco de Paño Fijo  
peso: 0,59 Kg/m



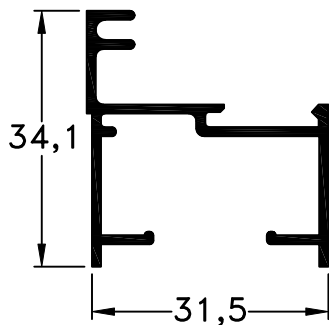
994 - Travesaño de 75 mm  
peso: 0,96 Kg/m



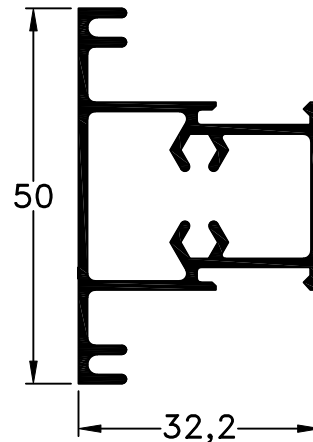
993 - Travesaño de 34 mm  
peso: 0,67 Kg/m

Escala 1:1  
Tolerancia en Peso +/- 10%

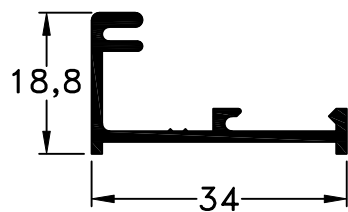
20-01-12 **TRADICIONAL.21**



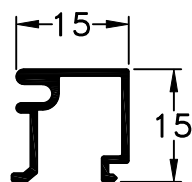
673 - Marco  
peso: 0,39 Kg/m



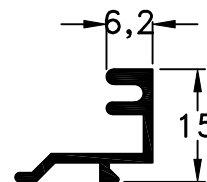
674 - Travesaño  
peso: 0,63 Kg/m



952 - Porta Contravidrio  
peso: 0,28 Kg/m



908 - Contravidrio  
peso: 0,16 Kg/m



909 - Contravidrio  
peso: 0,16 Kg/m